



PANDA SCANNER
ALL OVER THE WORLD

 www.panda-scanner.com
 info@panda-scanner.com

Chengdu | Ziyang | Suzhou | Ningbo | Hong Kong | Brazil | USA



PANDA free

Panda 🐾
Scanner

Free Your Scanning

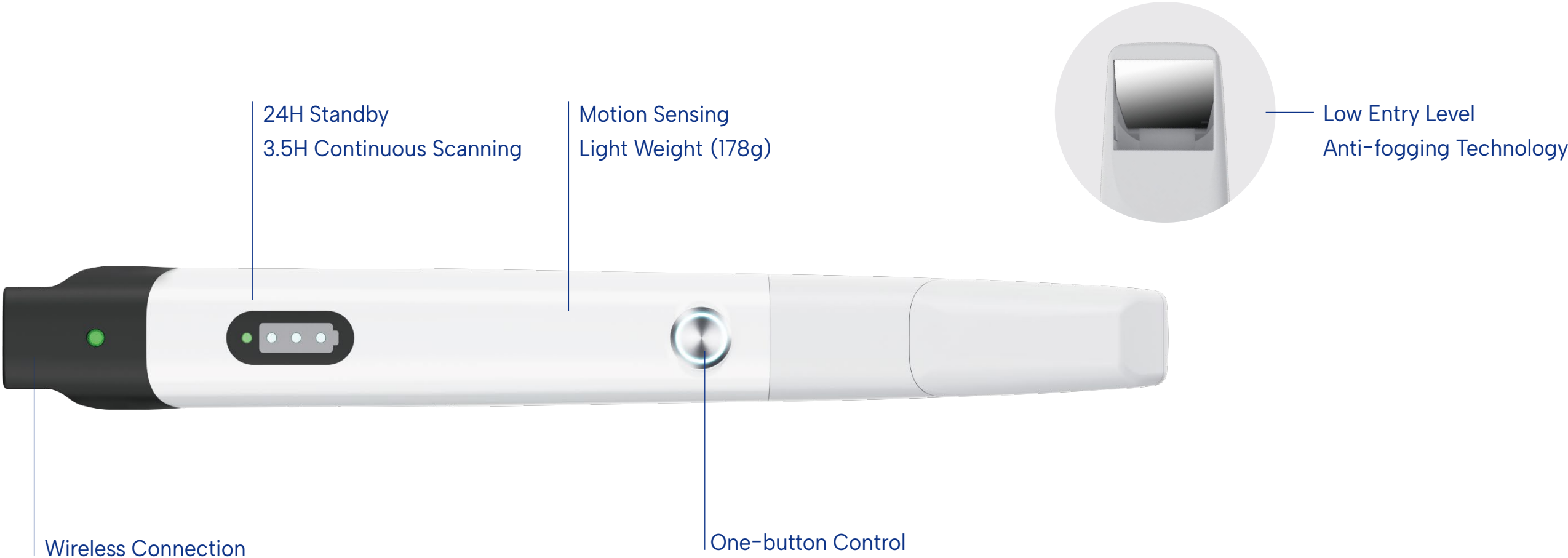


Double Efficiency Starts with **PANDA free**

The **PANDA free** wireless intraoral scanner features an ergonomic design, focusing on ease of use and convenience while ensuring high-quality and accurate scan data. Wireless, lightweight and portable design, delivering an efficient and precise scanning experience. Scanning is easier than ever.

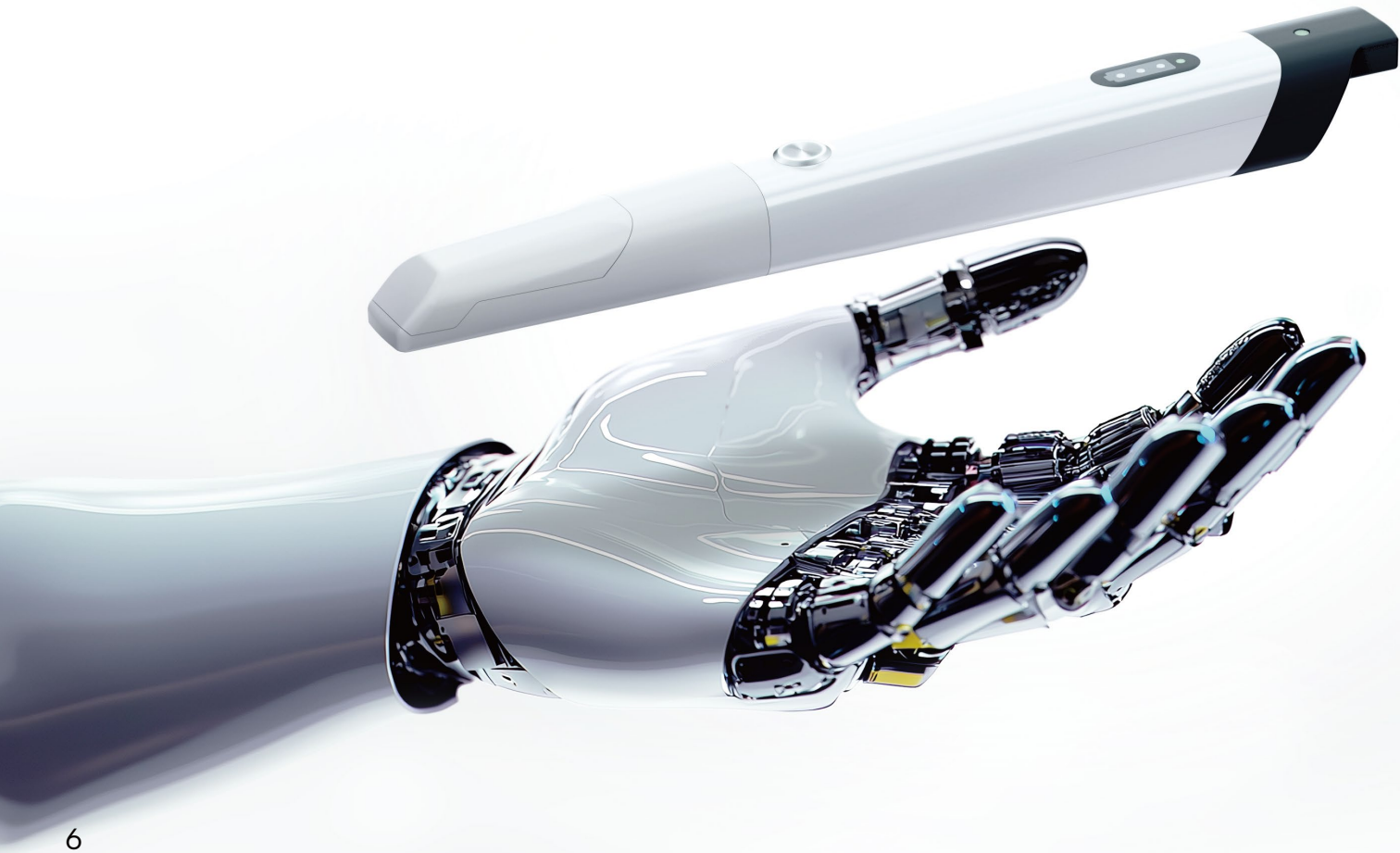
Cable-free, Unleash Possibilities

As the newest member of the PANDA family, **PANDA free** offers enhanced performance without cable constraints, meeting the digital and intelligent needs of clinics.



One Click, Perfect Fit

Our self-developed Dynamic Staring 3D Scanning technology can effectively achieve the balance between scanning speed and imaging accuracy.



Fast

18x16mm ultra-large scan field, 1-2 minute full-arch scanning, up to 24 fps scanning speed.



Reliable

Precision within 5 μ m, accuracy within 7 μ m, restore the true intraoral appearance.



Effective

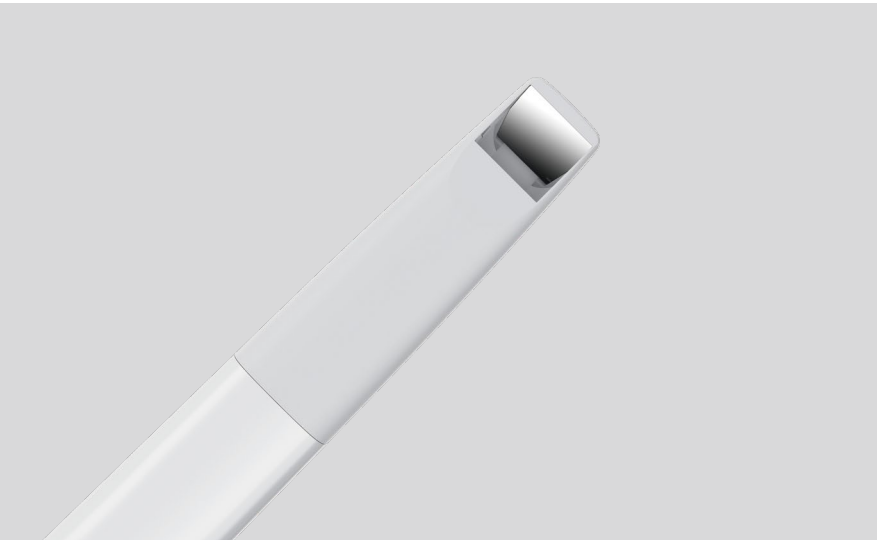
Lossless Transparent Transmission Technology with 1 multi-functional button, ensures 24/7 diagnostic efficiency improvement.



Easy

178g ultra-light design, easy to handle, 24h stand-by, adapts to complex clinical scenarios.

Versatile and Free



Diverse Clinical Applications

The PANDA free tip is only 14mm high with a depth of field up to 20mm, offering a wider scan range. Paired with the upgraded PANDA Scanner software, it meets diverse clinical needs.

Visualized Doctor-Patient Communication

The 3D digital imaging mode provides clear details and complete data, helping patients understand their dental issues and improving communication efficiency.

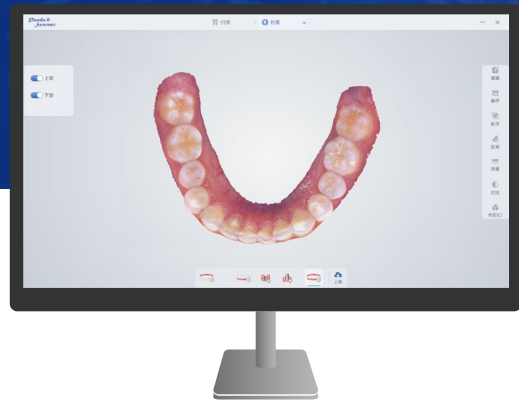
Facilitating Clinic-Lab Collaboration

Supporting comprehensive information aggregation, enabling real-time access to patient cases. Breaks down the traditional communication barriers between clinics and labs in dental care, making collaboration more convenient and efficient.

Digital Brand Marketing

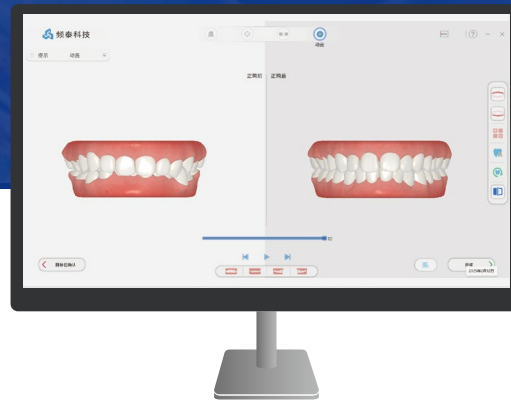
Offers full-chain digital products and software support, cloud storage for scan data, and synchronized patient information, optimizing clinic workflows and enhancing brand influence.

Smart Engine, Exceptional Experience



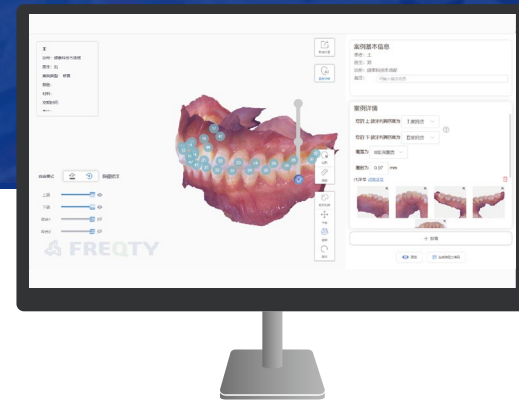
Panda Center

Panda Center integrates all apps in one place, providing efficient and intelligent workflow, promoting visualized, personalized, and intelligent dental treatment.



Panda Orthosim

Combine A.I with Freqty unique algorithm to customize orthodontic plans, improving treatment accuracy and delivering a new aesthetic experience.



AI Diagnosis

Freqty Cloud supports AI-powered 3D diagnostic reports, enhancing doctor-patient communication efficiency and quality.





Dr. Luciano Ferreira

Doctor of Dental Surgery





As a loyal user of Panda Scanner, **PANDA free** showcases excellence from every angle. Its compact design and powerful scanning performance will undoubtedly lead the wireless intraoral scanner field.

Like its predecessors, it maintains top-tier scan speed and quality. The wireless design simplifies the clinical environment, and the long battery life keeps me focused on my work without worrying about power.

Explore a New
Life with
PANDA free

PANDA Care

We are committed to providing global customers with high-quality after-sales service, ensuring a worry-free experience with our products.

-  Multilingual Support
-  24/7 Response
-  Global After-sales Training
-  Remote Service

PANDA free	Technical Parameters
Scan Principle	Dynamic Staring 3D Scanning
Total Size	241mm x 30mm x 28mm
Weight	178g
Number of Tips	6 tips (autoclavable)
Tips Size	83mm x19mm x14mm
Scan Field	18mm x16mm
Depth of Field	0~20 mm
Output Files	STL, PLY, custom encrypted PTY format
Connection Method	Wireless, the base is connected with a USB 3.0 cable
Full Arch Scanning Time	<1 min
Accuracy	≤7 μm
Precision	≤5 μm
Light Source	White LED+Laser
Language	Supports Multi-language Switching
Continuous Scanning Time	3.5h
Multi-function Button	Yes
Motion Sensing	Yes

*The parameters are subject to change, the final interpretation is reserved by Freqty.

Panda 
Scanner